



# Barry Lawrence Ruderman Antique Maps Inc.

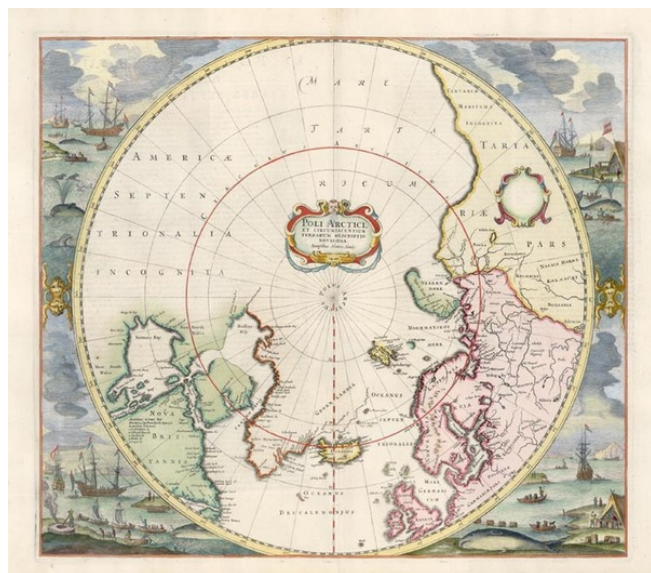
7407 La Jolla Boulevard  
La Jolla, CA 92037

[www.raremaps.com](http://www.raremaps.com)

(858) 551-8500  
[blr@raremaps.com](mailto:blr@raremaps.com)

## **Poli Arctici, et Circumiacentium Terrarum Descriptio Novissima**

**Stock#:** 12035  
**Map Maker:** Hondius  
**Date:** 1636 (1639)  
**Place:** Amsterdam  
**Color:** Hand Colored  
**Condition:** VG+  
**Size:** 20 x 17 inches  
**Price:** SOLD



### **Description:**

Striking full color example of Hondius' map of the North Polar Regions. With the advances in the knowledge of the Arctic, Mercator's map of 1595 had become obsolete by the 1630s. For the 1636 English edition of the Mercator Hondius Atlas, Hondius engraved a new polar map. The first two editions issued in 1636 contained no decorative vignettes on the sides. The German edition issued in 1636 was the first decorative edition. Hondius drew on the Cartography of Herny Briggs for his model of Hudson's Bay, supplemented by Thomas James map of 1633. The usual confusion appears around Frobisher's Strait. The prospect of a NW Passage is left open, as is the entire Northwestern portion of North America. Dutch nomenclature appears along the coasts of Labrador. The map was issued from 1636 to the 1660s and was later reissued by DeWit. French text on the verso. Nice wide margins and attractive full color.

### **Detailed Condition:**