



Barry Lawrence Ruderman Antique Maps Inc.

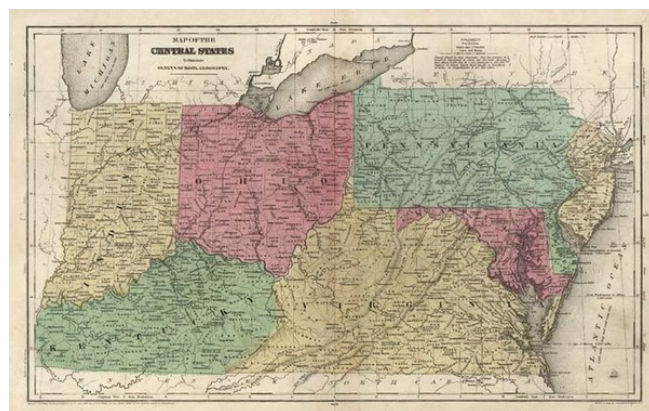
7407 La Jolla Boulevard
La Jolla, CA 92037

www.raremaps.com

(858) 551-8500
blr@raremaps.com

Map of the Central States [Virginia Kentucky, Indiana, Ohio, Pennsylvania, Maryland, Delaware and New Jersey]

Stock#: 10249
Map Maker: Robinson
Date: 1844
Place: New York
Color: Hand Colored
Condition: VG
Size: 17.5 x 10.5 inches
Price: SOLD



Description:

Detailed regional map, showing counties, towns, court houses, rivers, lakes, railroads, etc. From Olney's School Geography, one of the most prominent works of the period.

Detailed Condition: