



## Barry Lawrence Ruderman Antique Maps Inc.

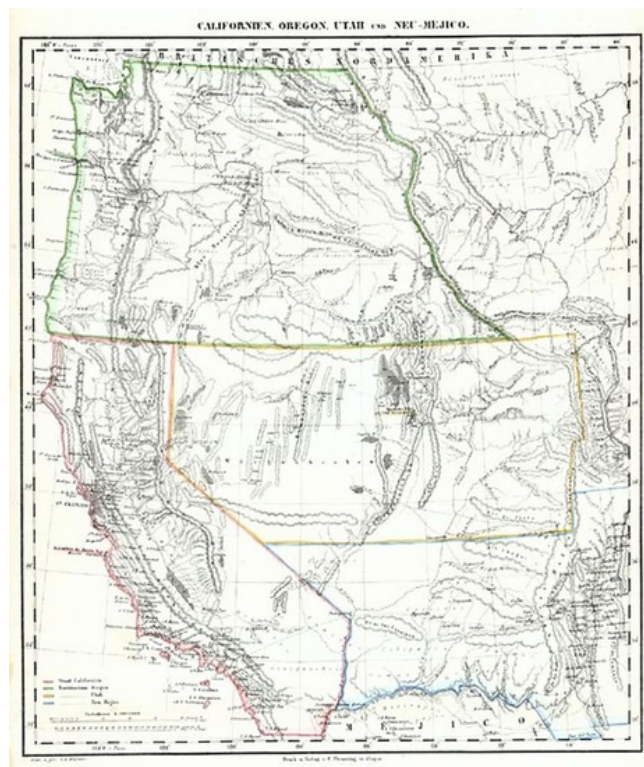
7407 La Jolla Boulevard  
La Jolla, CA 92037

[www.raremaps.com](http://www.raremaps.com)

(858) 551-8500  
[blr@raremaps.com](mailto:blr@raremaps.com)

### Californien, Oregon, Utah Und Neu-Mejico

**Stock#:** 1013  
**Map Maker:** Flemming  
**Date:** 1848  
**Place:** Glogau  
**Color:** Hand Colored  
**Condition:** VG+  
**Size:** 16 x 14 inches  
**Price:** SOLD



#### Description:

Highly detailed Map of the western Territories beyond the Rocky Mountains, immediately prior to the discovery of Gold in California. The cartography is primarily after Fremont. Salt Lake City is Neu Jerusalem. A number of mythical mountain ranges are shown in Nevada. Shows towns, roads, explorers. routes, rivers, mountains, lakes, forts, Indians and other details. Nice coverage in Oregon Territory as well, extending to Ft. Union on the Missouri. Many Colorado mountains identified. One of the best Topographical and Geographical coverages of the West to appear in a mid-19th Century atlas, surpassing the detail of Mitchell, Tanner, Morse and other atlas publishers of this era.

#### Detailed Condition: