



Barry Lawrence Ruderman Antique Maps Inc.

7407 La Jolla Boulevard
La Jolla, CA 92037

www.raremaps.com

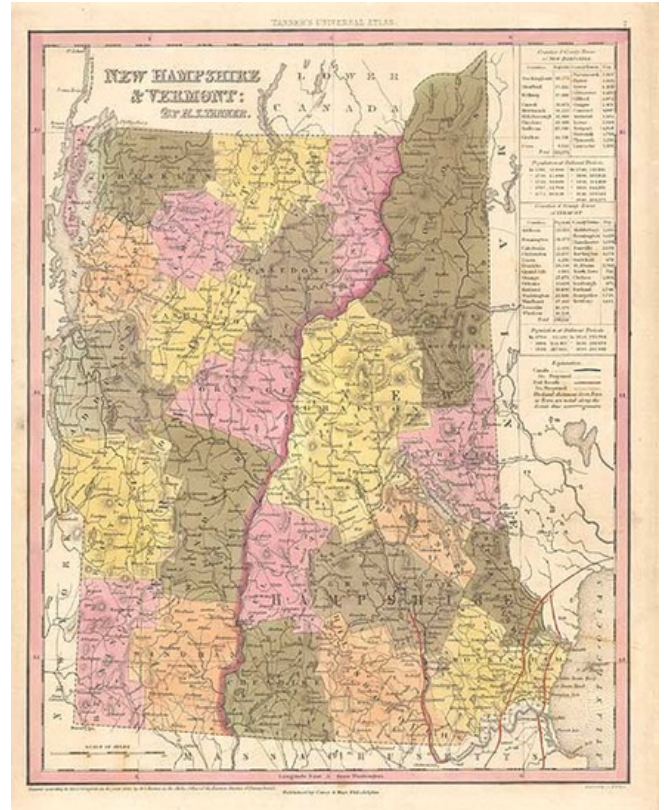
(858) 551-8500
blr@raremaps.com

New Hampshire & Vermont: By H.S. Tanner

Stock#: 0794
Map Maker: Tanner

Date: 1840 (1844)
Place: Philadelphia
Color: Hand Colored
Condition: VG
Size: 15 x 12 inches

Price: SOLD



Description:

Nice example of Tanner's map of New Hampshire and Vermont, hand colored by counties, and showing towns, roads with distances, railroads, and a host of other details. The key shows counties and towns in each state, with populations, and populations on a decade by decade basis since 1790. Tanner's maps rarely appears on the market. A nice wide margined example.

Detailed Condition: