



Barry Lawrence Ruderman Antique Maps Inc.

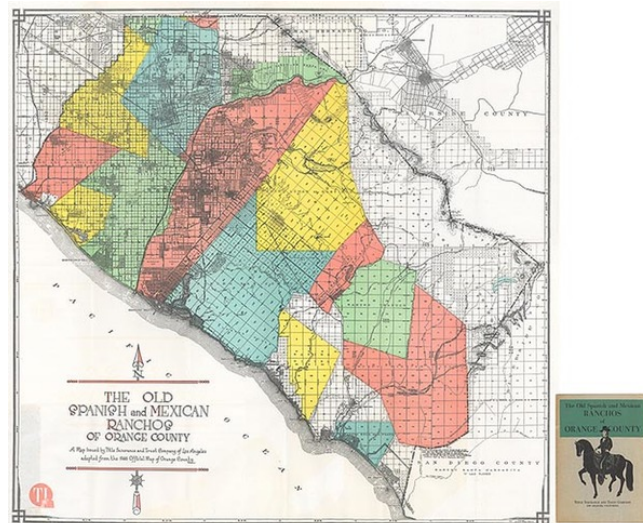
7407 La Jolla Boulevard
La Jolla, CA 92037

www.raremaps.com

(858) 551-8500
blr@raremaps.com

The Old Spanish and Mexican Ranchos of Orange County A Map issued by Title Insurance & Trust Company of Los Angeles adapted from the 1946 Official Map [with text pamphlet]

Stock#: 0432
Map Maker: Title Insurance & Trust Company
Date: 1955
Place: Los Angeles
Color: Color
Condition: Fine
Size: 21 x 21 inches
Price: SOLD



Description:

Interest in the Spanish and Mexican Ranchos and the lack of good maps from the period make promotional pieces of this nature an wonderful revaluation. The map shows the location of approximately 20 ranchos, super-imposed over a modern map of Orange County, circa 1946. Accompanied by an 18 page text by WW Robinson, including text about each of the Ranchos. A marvelous piece of ephemera!

Detailed Condition: