



Barry Lawrence Ruderman Antique Maps Inc.

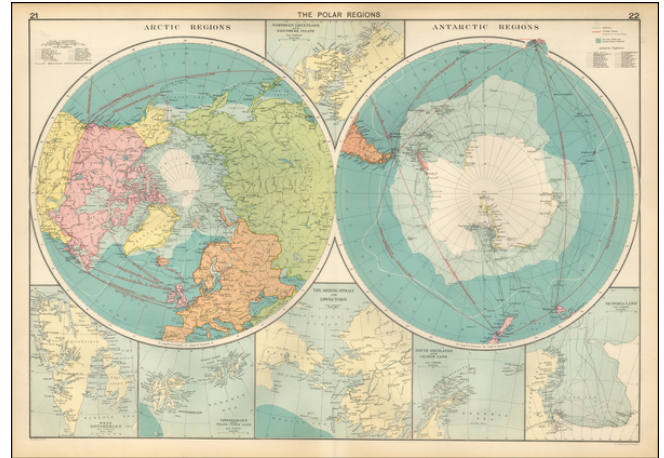
7407 La Jolla Boulevard
La Jolla, CA 92037

www.raremaps.com

(858) 551-8500
blr@raremaps.com

The Polar Regions (Arctic Regions and Antarctic Regions)

Stock#: 0052dg
Map Maker: Philip & Son
Date: 1920 circa
Place: London
Color: Color
Condition: VG+
Size: 27 x 19 inches
Price: SOLD



Description:

Detailed map of the polar regions on a hemispheric projection, with smaller inset maps of various smaller parts of the Polar regions.

In each corner, there is a list of polar explorers, north polar regions on the left and south polar regions on the right, with the tracks of each explorer notes with a different code.

Detailed Condition: