



Barry Lawrence Ruderman Antique Maps Inc.

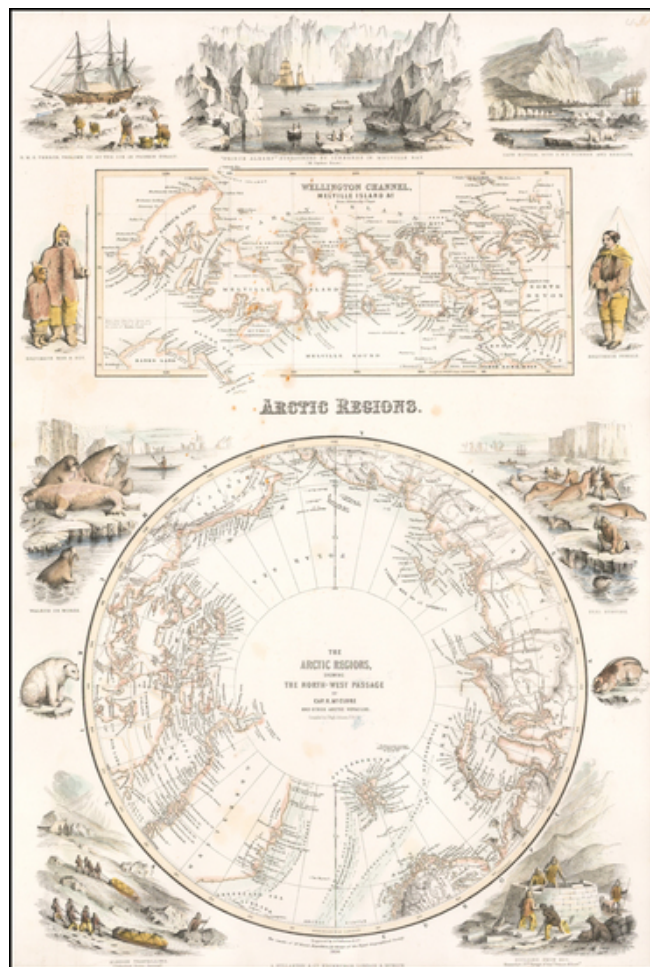
7407 La Jolla Boulevard
La Jolla, CA 92037

www.raremaps.com

(858) 551-8500
blr@raremaps.com

Arctic Regions

Stock#: 0001dg
Map Maker: Fullarton & Co.
Date: 1856
Place: Edinburgh
Color: Color
Condition: VG
Size: 18.5 x 13 inches
Price: SOLD



Description:

Striking map of the North Polar regions, published by Fullarton & Co.

The map includes a detailed hemispherical map of the Arctic Regions with inset map of the Wellington Channel and Melville Island.

The two maps are surrounded by vignettes of Arctic landscapes, wildlife, and native people. The vignettes include:

- H.M.S. Terror thrown up by the ice in frozen strait
- "Prince Albert" surrounded by icebergs in Melville Bay



**Barry Lawrence Ruderman
Antique Maps Inc.**

7407 La Jolla Boulevard
La Jolla, CA 92037

www.raremaps.com

(858) 551-8500
blr@raremaps.com

Arctic Regions

- Cape Hotham with H.M.S. Pioneer and Resolute
- Numerous native costumes and scenes

Detailed Condition:

Minor foxing.