



# Barry Lawrence Ruderman Antique Maps Inc.

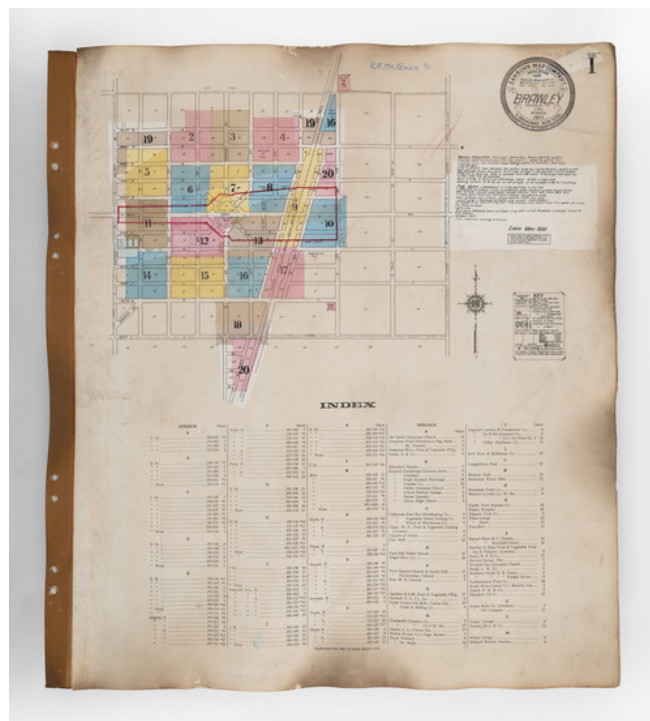
7407 La Jolla Boulevard  
La Jolla, CA 92037

[www.raremaps.com](http://www.raremaps.com)

(858) 551-8500  
[blr@raremaps.com](mailto:blr@raremaps.com)

## (Southern California Fire Insurance Atlas) Brawley Imperial Co. Cal.

**Stock#:** 97309  
**Map Maker:** Sanborn Map Company  
**Date:** 1922 (updated to May 1930)  
**Place:** New York  
**Color:** Hand Colored  
**Condition:** VG  
**Size:** 21.5 x 25.5 inches  
**Price:** SOLD



### Description:

#### *Rare 1920s Sanborn Atlas of Brawley, California*

*Brawley Imperial Co. Cal.*, a fire insurance atlas produced by the Sanborn Company in 1922 with subsequent updates in 1930, provides a detailed representation of the built environment of Brawley, a town in California's Imperial County that didn't exist before 1906. The atlas, spanning 20 sheets including its index, showcases essential information about the city's infrastructure, water facilities, and fire prevention resources, making it a valuable document for understanding urban planning in early 20th-century rural Southern California.

Brawley, situated in Imperial County, underwent rapid growth and urbanization in the 1920s, largely spurred by expansive agricultural development enabled by irrigation from the Colorado River. The present atlas, with extensive pasted updates (maintained by a Sanborn Co. "paster"), attests to the massive changes underway in Brawley between 1922 and 1930. Notably, several large scale Japanese-owned fruit and vegetable packing concerns are indicated on the maps. Some of the Japanese families of Brawley were later forced into internment camps during World War II.



## Barry Lawrence Ruderman Antique Maps Inc.

7407 La Jolla Boulevard  
La Jolla, CA 92037

[www.raremaps.com](http://www.raremaps.com)

(858) 551-8500  
[blr@raremaps.com](mailto:blr@raremaps.com)

---

### **(Southern California Fire Insurance Atlas) Brawley Imperial Co. Cal.**

As cities such as Brawley expanded, the need for detailed urban planning grew paramount and fire insurance maps such those comprising the present atlas played a vital role. These documents not only aided insurance underwriters in assessing fire risks for various properties, they guided urban development, as local governments were often subscribers to Sanborn's mapping services. This Brawley atlas, with its layers of detail for the years 1922-1930, records the city's built environment to a detail level not available elsewhere, revealing, for example, a segregated public school system (with Mexican and African-American school children in designated schools). For all of the above, such a group of maps stand today as vital primary sources for understanding the urban and community fabric of places like Brawley.

Here follows a selection of notable structures shown in the atlas:

- Imperial Mill & Ginning Co.
- J. Katerkaru Co. Vegetable Packing (i.e. Katerkaru, a Japanese-owned vegetable shipper)
- K. Asamen Vegetable & Produce Shipping
- Iwata & Co. Fruit & Vegetable & Shipping
- Brawley Union High School
- Hotel St. Regis
- Municipal Light & Water Works
- East Side Public School (Mexican and Negro)
- Negro School
- Numerous Mexican and Negro Shacks
- American Fruit Growers Inc.
- Imperial Ice & Development Co.'s Ice Plant No. 3
- Tourist Inn
- Planters Hotel

The water infrastructure, described extensively, portrays a municipality in possession of a sophisticated system. Featuring both a pump and gravity system, it encompasses facilities such as a pumping plant, settling basins, and reservoirs with a total capacity of 12,000,000 gallons. The distribution network's capacity, with its variety of main sizes and hydrants, underscores the city's commitment to ensuring adequate water supply in emergencies.

### **Rarity**

The Brawley Sanborn atlas is very rare in the market. No examples of any edition located in OCLC. The Library of Congress has digitized editions of 1910, 1911, 1916, and a 1922 (updated to 1962), but not the present 1922 iteration updated to 1930.



**Barry Lawrence Ruderman  
Antique Maps Inc.**

7407 La Jolla Boulevard  
La Jolla, CA 92037

[www.raremaps.com](http://www.raremaps.com)

(858) 551-8500  
[blr@raremaps.com](mailto:blr@raremaps.com)

---

**(Southern California Fire Insurance Atlas) Brawley Imperial Co. Cal.**

**Detailed Condition:**

Original hand-color. Unbound, with sheets mounted on alternating tabs. 20 sheets, including the index page. Complete. Pastedown updates to May 1930. Ink stamp and ownership inscription of C.A. McKenzie G/A. Minor smoke toning at the edges.