



**Barry Lawrence Ruderman
Antique Maps Inc.**

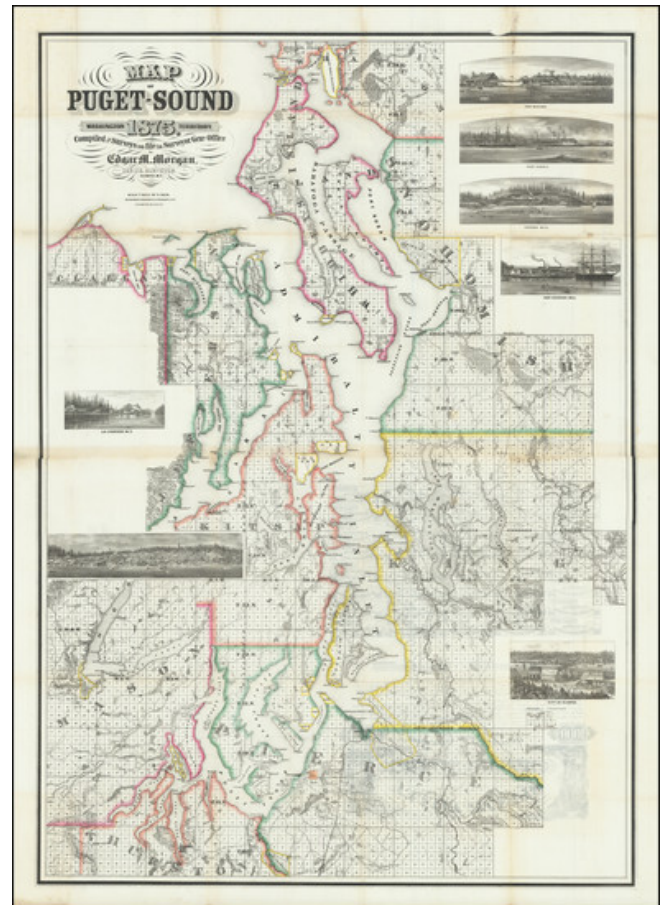
7407 La Jolla Boulevard
La Jolla, CA 92037

www.raremaps.com

(858) 551-8500
blr@raremaps.com

**Map of Puget-Sound Washington Territory 1875. Compiled from Surveys on file in
Surveyor Gens. Office by Edgard M. Morgan, Dep. U.S. Surveyor Olympia. W.T.**

Stock#: 74255
Map Maker: Morgan / Britton & Rey
Date: 1875
Place: Olympia, Washington Territory
Color: Hand Colored
Condition: VG
Size: 36 x 51 inches
Price: SOLD



Description:

The Best 19th-Century Map of Puget Sound. One Copy in OCLC.

Impressive and imposing 19th-century large-format map of Puget Sound, prepared by Deputy U.S. Surveyor Edgard M. Morgan in Olympia in 1875.

The map shows the whole of Puget Sound from Olympia and Tumwater at its base in the south to Whidbey Island ("Whidbey's Island") and the bottom tip of Fidalgo Island in the north.

The map has a clean 19th-century survey map aesthetic, with a township and range grid stretching over almost all of what the map covers. The few areas not integrated into the grid already have early



Barry Lawrence Ruderman Antique Maps Inc.

7407 La Jolla Boulevard
La Jolla, CA 92037

www.raremaps.com

(858) 551-8500
blr@raremaps.com

Map of Puget-Sound Washington Territory 1875. Compiled from Surveys on file in Surveyor Gens. Office by Edgard M. Morgan, Dep. U.S. Surveyor Olympia. W.T.

landowners associated with them. The map also includes several reservations for the area's native American peoples and United States Military Reservations (outlined in yellow).

The map is hand-colored by counties, beginning with the southern part of Whatcom in the north and encompassing all or part of Snohomish, Clallam, Jefferson, Islands, Kitsap, King, Mason, Pierce, and Thurston.

The Northern Pacific is shown stretching away from Tacoma, which had been selected as the western terminus only two years before the map was made. The only other railroad on the map is the "Seattle & W. R.R." which extends from Seattle proper to the south end of Lake Washington (quite the trek!)

One of the best features of the map is its complement of excellent inset bird's-eye and landscape views of communities around Puget Sound. Clockwise from the top these include: "Port Madison", "Port Gamble", "Tacoma Mill", "Port Discovery Mill", "City of Olympia", "Seattle", and "La Conner W.T."

Rarity

The map is very rare. OCLC locates a single holding (UC-Berkeley), and we are aware of others at the California State Library and the Museum of History & Industry (Seattle). One was offered in the Streeter sale, and John Howell offered an ex-library copy for \$400 in 1972.

Detailed Condition:

Lithograph with original outline color. Removed from, but accompanied by original pocket folder. Flattened, with areas of loss along folds and in margins in-filled, with some visible discoloration.