



# Barry Lawrence Ruderman Antique Maps Inc.

7407 La Jolla Boulevard  
La Jolla, CA 92037

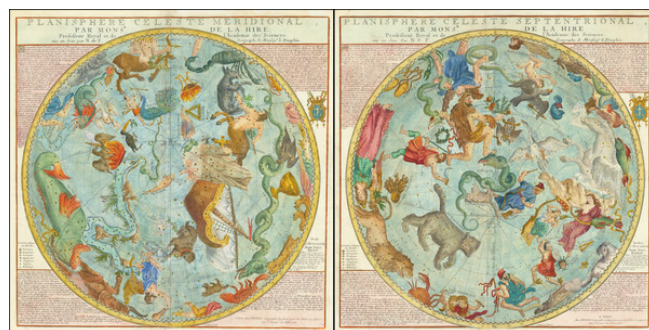
[www.raremaps.com](http://www.raremaps.com)

(858) 551-8500  
[blr@raremaps.com](mailto:blr@raremaps.com)

---

## Planisphere Celeste Meridional Par Monsr. De La Hire . . . [with] Planisphere Celeste Septentrional Par Monsr. De La Hire . . .

**Stock#:** 72299  
**Map Maker:** de Fer / Desnos  
**Date:** 1760  
**Place:** Paris  
**Color:** Hand Colored  
**Condition:** VG  
**Size:** 18.5 x 18.5 inches (each map)  
**Price:** SOLD



### Description:

#### *The Celestial Hemispheres*

Fine celestial chart of the constellations of the Northern Hemisphere and Southern Hemisphere, designed by Gabriel Phillippe de la Hire, one of France's most noted astronomers and a member of the Royal Academy of Science.

La Hire's constellation figures are influenced by Johann Bayer's great star atlas (*Uranometria*, 1603) although La Hire did not use Bayer's system of number stars based upon their brightness. In his treatise on Celestial maps, Warner identifies Sir Edmund Halley as one of the prime sources for the text surrounding the Constellations.

The son of a distinguished Paris art professor, Phillippe de la Hire (1640-1718) studied art in Italy before turning to science and mathematics, where he distinguished himself by publishing important treatises on conics. La Hire is best known for his design of charts of the Constellations of the Northern and Southern Hemispheres, which were published by Nicolas De Fer, one of France's most important map publishers.

The map was engraved by Hendrick van Loon, who was responsible for a number of the most important French maps of the late 17th and early 18th centuries.

### Detailed Condition: