



Barry Lawrence Ruderman Antique Maps Inc.

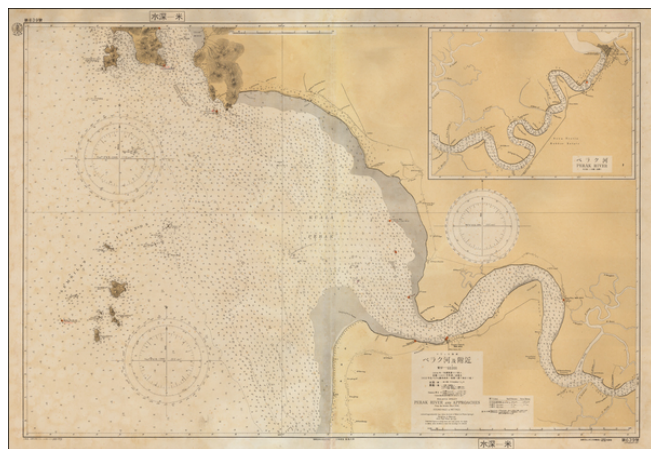
7407 La Jolla Boulevard
La Jolla, CA 92037

www.raremaps.com

(858) 551-8500
blr@raremaps.com

(Malaysia) Perak River and Approaches

Stock#: 53483
Map Maker: Maritime Safety Agency of Japan
Date: 1948 circa
Place: n.p.
Color: Uncolored
Condition: VG
Size: 39 x 26 inches
Price: \$ 475.00



Description:

Rare separately issued sea chart of a part of the west coast of Malaysia, published in Japan by the Maritime Safety Agency of Japan, shortly after the Second World War.

The map extends from Pangkor Island to the mouth of the Perak River and then up river to Teluk Intan.

The map indicates that it is drawn from an 1935 British Admiralty Chart.

A very unusual chart -- the first we have ever seen.

Detailed Condition:

Minor soiling and signs of use.