



# Barry Lawrence Ruderman Antique Maps Inc.

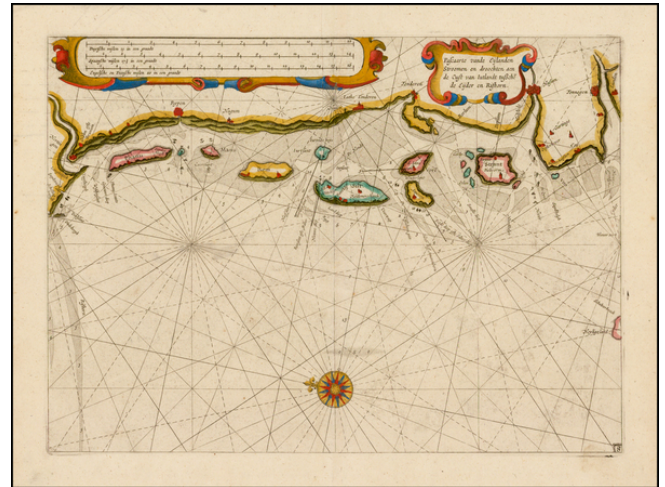
7407 La Jolla Boulevard  
La Jolla, CA 92037

[www.raremaps.com](http://www.raremaps.com)

(858) 551-8500  
[blr@raremaps.com](mailto:blr@raremaps.com)

## Pascaarte vande Eijlanden Stroomen en droochten aen de Cust van Iutlandt tusche de Eijder en Rishorn

**Stock#:** 40106se  
**Map Maker:** Blaeu  
**Date:** 1623  
**Place:** Amsterdam  
**Color:** Hand Colored  
**Condition:** VG+  
**Size:** 10 x 14.5 inches  
**Price:** SOLD



### Description:

Fine example of this rare sea chart of the west coast of Jutland, from Tønning and Husum in the South to Isbjerg and Blavand in the north, published by Blaeu in his *Zeespiegel*, first published in 1623.

The *Zeespiegel* was the second of Blaeu's sea atlas, following after his *Het Licht der Zee-Vaert*, which was first issued in 1607. The *Licht* was modeled after Willem Blaeu's work, which had the same oblong format with charts intended for professional seafarers. Blaeu's *Licht* was published in three parts, the first containing sea charts of the area around the Netherlands, England, France and Spain. The second issue concerned the charts of Northern England, Scotland and Scandinavia. Part 3 included charts of the Mediterranean.

Following the expiration of Blaeu's copyright on the *Licht*, Johannes Jansson produced a substantially similar work in 1620. In response, Blaeu produced the *Zeespiegel*, employing an entirely new portable format and abandoning the oblong style of his early *Licht*.

### Detailed Condition: