



**Barry Lawrence Ruderman  
Antique Maps Inc.**

7407 La Jolla Boulevard  
La Jolla, CA 92037

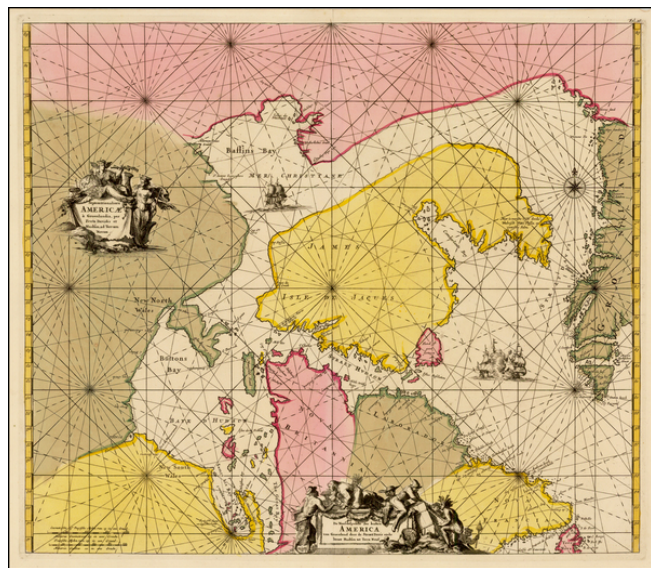
[www.raremaps.com](http://www.raremaps.com)

(858) 551-8500  
[blr@raremaps.com](mailto:blr@raremaps.com)

---

**Septentrionaliora Americae a Groenlandia, per Freta Davidis et Hudsonad Terrarum  
Novam**

**Stock#:** 38302  
**Map Maker:** De Wit  
**Date:** 1675  
**Place:** Amsterdam  
**Color:** Hand Colored  
**Condition:** VG+  
**Size:** 22 x 19 inches  
**Price:** SOLD



**Description:**

Fine old color example of De Wit's map of Hudson Bay, Baffin Bay, Button Bay, Davis Straits and contiguous parts of the coastline of Canada and Groenland.

Kershaw notes that De Wit's map is one of a series of maps beginning with Van Loon in 1668, which dominated arctic navigation for the remainder of the 17th Century.

The map is based upon polar maps issued by Jansson and Blaeu, augmented by information derived from Sanson's map of 1656 and others. This is the first state of the map, as noted by Kershaw (Entry 209).

**Detailed Condition:**

Old Color.