



# Barry Lawrence Ruderman Antique Maps Inc.

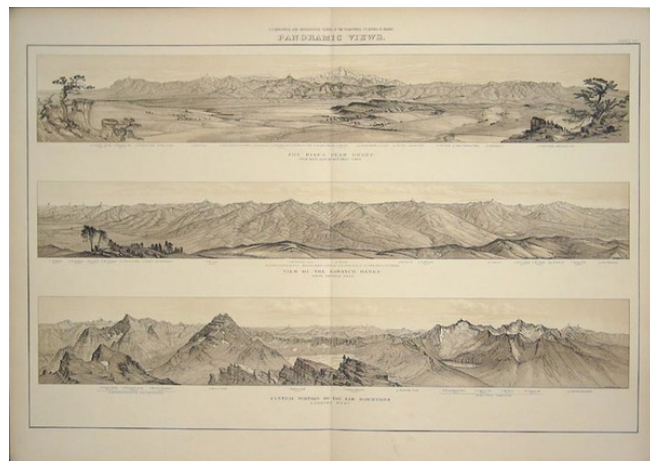
7407 La Jolla Boulevard  
La Jolla, CA 92037

[www.raremaps.com](http://www.raremaps.com)

(858) 551-8500  
[blr@raremaps.com](mailto:blr@raremaps.com)

## **Panoramic Views: The Pike's Peak Group From Bluff East of Monument Creek [and] View of the Sawatch Range From Buffalo Peak [and] Central Portion of Elk Mountains Looking West**

**Stock#:** 11740  
**Map Maker:** Hayden  
**Date:** 1877  
**Place:** New York  
**Color:** Uncolored  
**Condition:** VG+  
**Size:** 35 x 24 inches  
**Price:** SOLD



### **Description:**

Set of three large format views, each of which includes a key below the view identifying at least a dozen towns, mountains or other significant locations each, including Colorado Springs, Cheyenne Mountain, Garden of the Gods, Pike's Peak, Ute Pass and Monument Park on the Pike's Peak view, Mt. Ouray, Mt. Shavano, Mt. Antero, Mt. Princeton, Mt. Yale, Mt. Harvard, La Plata Mt. and Mt. Elbert (Sawatch view), and Castle Peak, Pyramid Peak, Maroon Mountain, Treasury Mountain, Snowmass Mountain, Snowmass Creek Capitol Peak, Mt. Daly and Sopris Peak (Elk Mountains view). Each of the views was drawn by W.H. Holmes in 1874. In 1869 Hayden was given a large appropriation and made head of the United States Geological Survey of the Territories. The biggest and best-known of the Great Surveys. The primary purpose of the expeditions to the Rocky Mountains was to evaluate the geological and mineral content of the regions. In addition to his interest in western minerals, Hayden was also one of the first to see the West as the land of the nature-loving tourist. In 1871 Hayden made an expedition into the Yellowstone Geyser Region resulting in spectacular photographs taken by William H. Jackson. The Yellowstone expedition made Hayden famous, but perhaps his most important was the detailed exploration and mapping of Colorado. Here his teams worked through some of the most rugged country in the West to complete the masterful Atlas of Colorado.

### **Detailed Condition:**