



# Barry Lawrence Ruderman Antique Maps Inc.

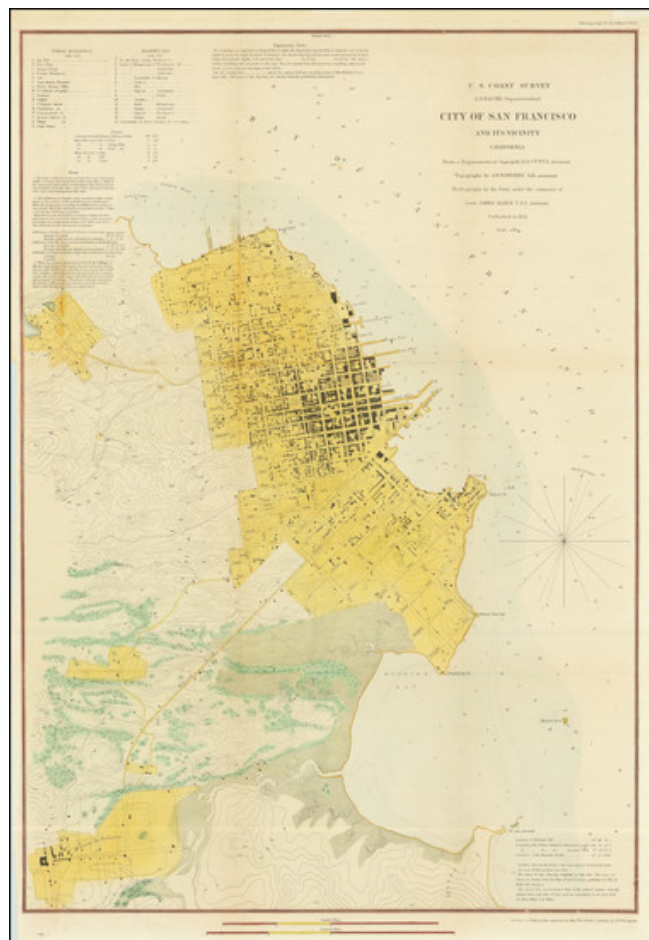
7407 La Jolla Boulevard  
La Jolla, CA 92037

[www.raremaps.com](http://www.raremaps.com)

(858) 551-8500  
[blr@raremaps.com](mailto:blr@raremaps.com)

## City of San Francisco and Its Vicinity . . . 1853

**Stock#:** 88422  
**Map Maker:** United States Coast Survey  
**Date:** 1853  
**Place:** Washington  
**Color:** Hand Colored  
**Condition:** VG+  
**Size:** 18 x 26 inches  
**Price:** \$ 1,200.00



### Description:

An excellent large format early map of the City and part of the Bay, including soundings.

Extends to the Mission de Dolores and Pt San Quentin and shows the street layout, with buildings, wharfs, roads, elevations, etc.

One of the best large early maps of the City.

### Detailed Condition: