



# Barry Lawrence Ruderman Antique Maps Inc.

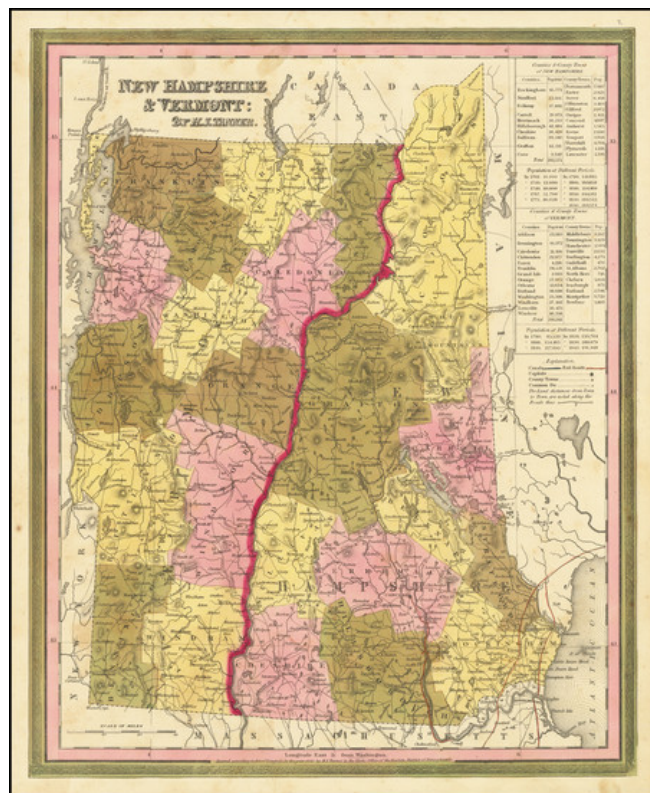
7407 La Jolla Boulevard  
La Jolla, CA 92037

[www.raremaps.com](http://www.raremaps.com)

(858) 551-8500  
[blr@raremaps.com](mailto:blr@raremaps.com)

## New Hampshire & Vermont: By H.S. Tanner

**Stock#:** 85865  
**Map Maker:** Tanner  
**Date:** 1840  
**Place:** Philadelphia  
**Color:** Hand Colored  
**Condition:** VG+  
**Size:** 12 x 14.5 inches  
**Price:** \$ 175.00



### Description:

Nice example of Tanner's map of New Hampshire and Vermont, hand colored by counties, and showing towns, roads with distances, railroads, and a host of other details.

The key shows counties and towns in each state, with populations, and populations on a decade by decade basis since 1790. Tanner's maps rarely appears on the market. A nice wide margined example.

### Detailed Condition: