



Barry Lawrence Ruderman Antique Maps Inc.

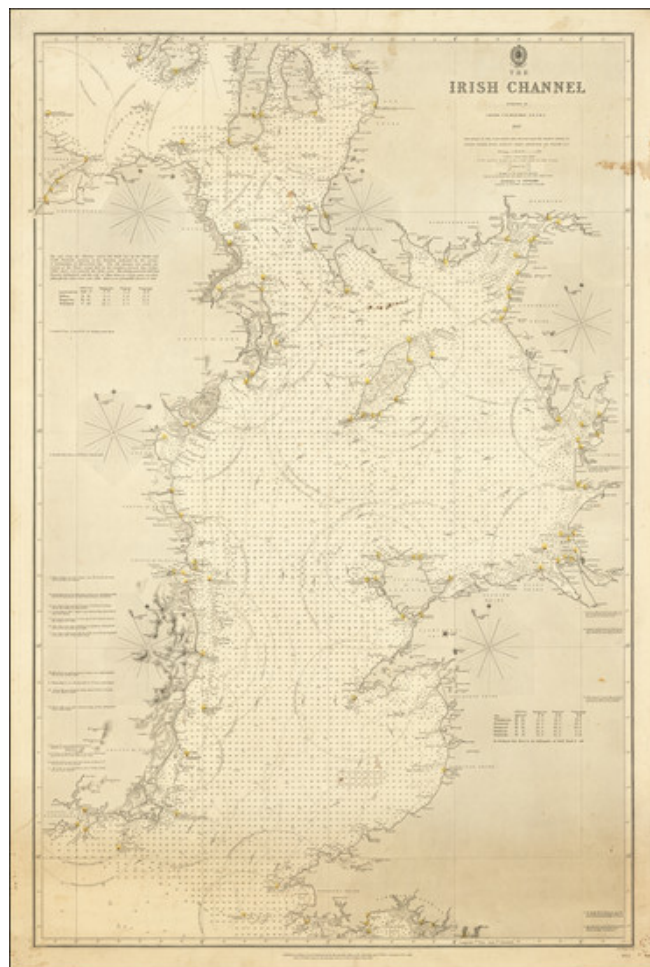
7407 La Jolla Boulevard
La Jolla, CA 92037

www.raremaps.com

(858) 551-8500
blr@raremaps.com

The Irish Channel . . . 1847

Stock#: 90725
Map Maker: Beechey / British Admiralty
Date: 1847 (1860)
Place: London
Color: Uncolored
Condition: VG
Size: 24.75 x 37.5 inches
Price: \$ 675.00



Description:

Scarce sea chart of the Irish Channel, surveyed by famed naval Arctic and Alaskan explorer Frederick William Beechey.

Centered on the Isle of Man, the chart illustrates the most advanced charting of one of this busy and important waterway.

The map was published following Beechey's extensive survey work in the Irish Channel, which resulted in his publication of an important Tidal Chart in 1846 and this chart.

Frederick William Beechey



Barry Lawrence Ruderman Antique Maps Inc.

7407 La Jolla Boulevard
La Jolla, CA 92037

www.raremaps.com

(858) 551-8500
blr@raremaps.com

The Irish Channel . . . 1847

Frederick William Beechey (1796 - 1856) was an English naval officer, artist, explorer, hydrographer and writer.

The son of two painters, Sir William Beechey, RA and his second wife, Anne Jessop, Beechey entered the Royal Navy at the age of 10 under the command of John Jervis, 1st Earl of St Vincent. He was promoted to midshipman on February 8 1807 and saw active service during the War of 1812. He served in the Battle of New Orleans.

In 1818, Beechey sailed on *HMS Trent* under Lieutenant John Franklin in David Buchan's Arctic expedition, following which he wrote an important narrative. In the following year he accompanied Lieutenant W. E. Parry in *HMS Hecla*, sailing as far north as Melville Island.

In 1825, Beechey was appointed to command *HMS Blossom* on an expedition to explore the Bering Strait in concert with Franklin and Parry operating from the east. The whole voyage lasted more than three years, which included a visit to a Catholic mission in California in 1826. In 1831, *Beechey's Narrative of a Voyage to the Pacific and Bering's Strait to Co-operate with the Polar Expeditions, 1825-1828* was published.

Beechey Tidal Chart of the Irish Channel dated 1846

In 1835 and '36, Captain Beechey was employed on the coast survey of South America, and from 1837 to 1847, he carried on similar work along the Irish coasts, and in the North Sea and English Channel. He carried out detailed tidal surveys during this period, which were published, with charts, in two Royal Society papers in 1848 and 1851. This was the first published work of its kind since Edmond Halley's tidal chart appeared in about 1702.

He was appointed in 1850 to preside over the Marine Department of the Board of Trade. In 1854, he was made rear admiral, and in the following year was elected president of the Royal Geographical Society.

Detailed Condition: