



Barry Lawrence Ruderman Antique Maps Inc.

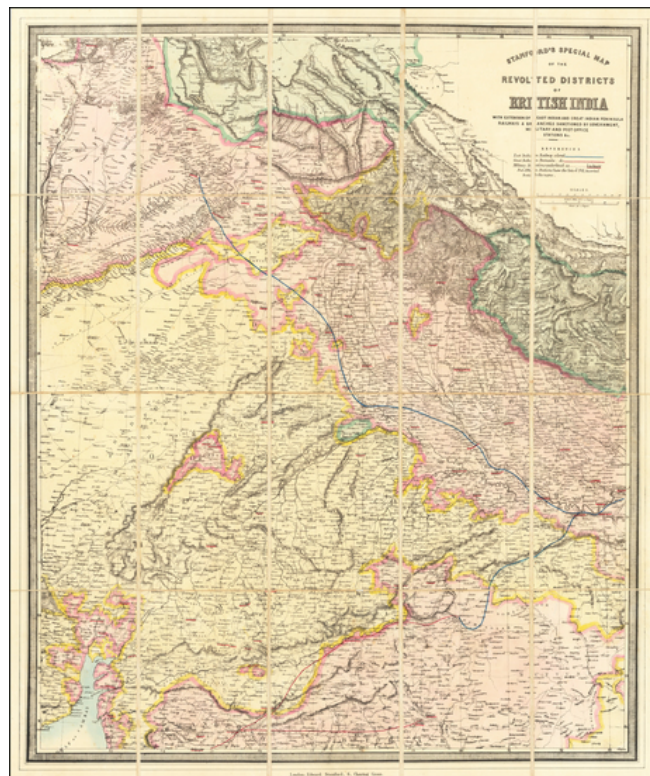
7407 La Jolla Boulevard
La Jolla, CA 92037

www.raremaps.com

(858) 551-8500
blr@raremaps.com

Stanford's Special Map of the Revolted Districts of British India With Extension of East Indian and Great Indian Peninsula Railways & Branches Sanctioned By Government, Military and Post Office Stations &c.

Stock#: 64375op
Map Maker: Stanford
Date: 1857
Place: London
Color: Hand Colored
Condition: VG+
Size: 22 x 27.5 inches
Price: SOLD



Description:

Rare map of Northern India and northeastern Pakistan, published by Edward Stanford in London.

The reference key notes the East Indian Railway (blue), Great Indian Peninsula Railway (red), with military stations underlined and post offices located.

The map illustrates the region affected by the Indian Rebellion of 1857.

The Indian Rebellion of 1857 was a major uprising in India in 1857-58 against the rule of the British East India Company, which functioned as a sovereign power on behalf of the British Crown. The rebellion began in May 1857 in the form of a mutiny of sepoys of the Company's army in the garrison town of Meerut, 40 miles northeast of Delhi (now Old Delhi). It then erupted into other mutinies and civilian rebellions chiefly in the upper Gangetic plain and central India.



**Barry Lawrence Ruderman
Antique Maps Inc.**

7407 La Jolla Boulevard
La Jolla, CA 92037

www.raremaps.com

(858) 551-8500
blr@raremaps.com

**Stanford's Special Map of the Revolted Districts of British India With Extension of East
Indian and Great Indian Peninsula Railways & Branches Sanctioned By Government,
Military and Post Office Stations &c.**

The rebellion posed a considerable threat to British power in that region, and was contained only with the rebels' defeat in Gwalior in June 1858.

Rarity

The map is extremely rare. We note examples at the British Library, Athenaeum Bibliotheek (Netherlands) University of Minnesota and Oxford University.

Detailed Condition:

Dissected and laid on linen, with original slipcase.