



Barry Lawrence Ruderman Antique Maps Inc.

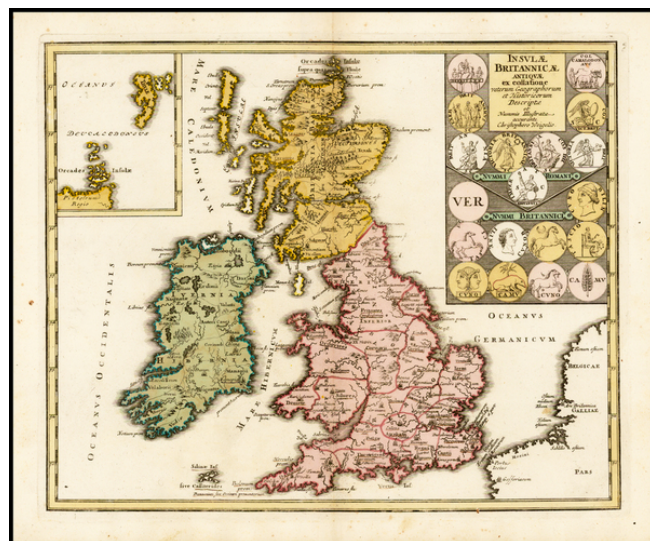
7407 La Jolla Boulevard
La Jolla, CA 92037

www.raremaps.com

(858) 551-8500
blr@raremaps.com

Insulae Britannicae Antiquae ex collatione . . .

Stock#: 34053
Map Maker: Weigel
Date: 1718
Place: Nuremberg
Color: Hand Colored
Condition: VG
Size: 15 x 12 inches
Price: SOLD



Description:

Striking map the British Isles during the time of the Roman Empire, featuring the geographical features known to the ancients and decorated with a vignettes and 19 medallions.

An interesting and highly decorative map.

Detailed Condition: