



Barry Lawrence Ruderman Antique Maps Inc.

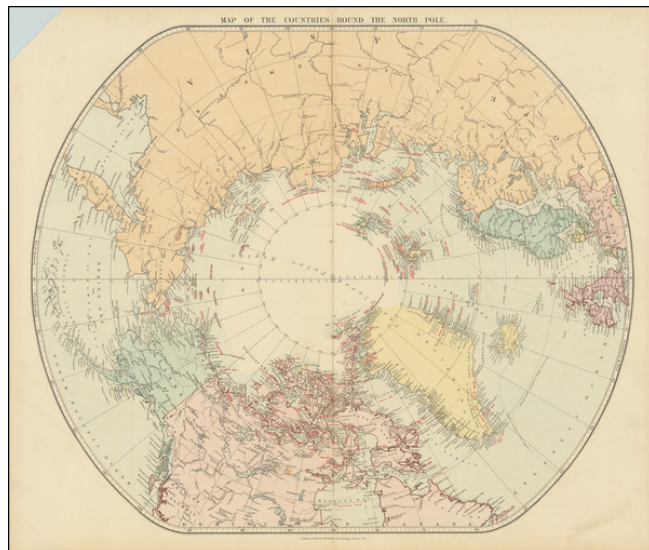
7407 La Jolla Boulevard
La Jolla, CA 92037

www.raremaps.com

(858) 551-8500
blr@raremaps.com

Map of the Countries Round the North Pole

Stock#: 101138
Map Maker: Stanford
Date: 1887
Place: London
Color: Color
Condition: VG+
Size: 24 x 21 inches
Price: \$ 475.00



Description:

Fine early edition of Edward Stanford's map depicting the entire Arctic Region, featuring the furthest-most points reached by numerous exploring expeditions.

This fascinating map embraces the entire Arctic regions of the World, within a unique ovoid presentation. Centered on the North Pole, it variously extends as far south as 50 to 55 degrees North. All countries are distinguished by their own colors, and major geographic and oceanic features are labeled.

Most interesting, is the labeling of the furthest-most points of literally dozens of expeditions of discovery, along with the corresponding dates (printed in red). These extend chronologically from Sebastian Cabot's supposed visit to northern Newfoundland in 1497 to the Greely expedition of 1882. All the great names are mentioned, including Frobisher, Davis, Hudson, Baffin, Barents, Bering, Franklin, Nordenskjold, Ross and Peary, amongst many others. The American portion of the Bering Sea is labelled with information on the seasonal fishing restrictions. The amount of information featured on the map is truly extraordinary, and is unrivalled by any Arctic map of comparable size.

Most interestingly, it notes the expedition of Lt. Adolphus Washington Greely of the U.S. Navy in 1882. His party was the first to cross Ellesmere Island (which is shown here to be only partially mapped) and to reach a point of 83°23'8" North, the furthest-most Northern point ever reached to date. The North Pole itself would not be definitively reached until the Admunden expedition of 1928.

The map was issued in 1887 by Edward Stanford, then Britain's leading map publisher, in an effort to



**Barry Lawrence Ruderman
Antique Maps Inc.**

7407 La Jolla Boulevard
La Jolla, CA 92037

www.raremaps.com

(858) 551-8500
blr@raremaps.com

Map of the Countries Round the North Pole

capitalize on the great contemporary interest in Polar expeditions, seen as the 'last frontier' in global exploration. Stanford had good connections with academic institutions such as the Royal Geographical Society and government bodies such as the Admiralty, so was always able to gain the most accurate information. The present map was one of Stanford's series of progressively updated maps of the Arctic Regions, the first of which was published around 1875, and the last issued in the 1930s.

The map is scarce on the market and was updated very frequently, making for a fascinating historical sequence of maps.

Detailed Condition:

Color map on 19th-century wove paper. Loss at the upper lefthand corner as shown.